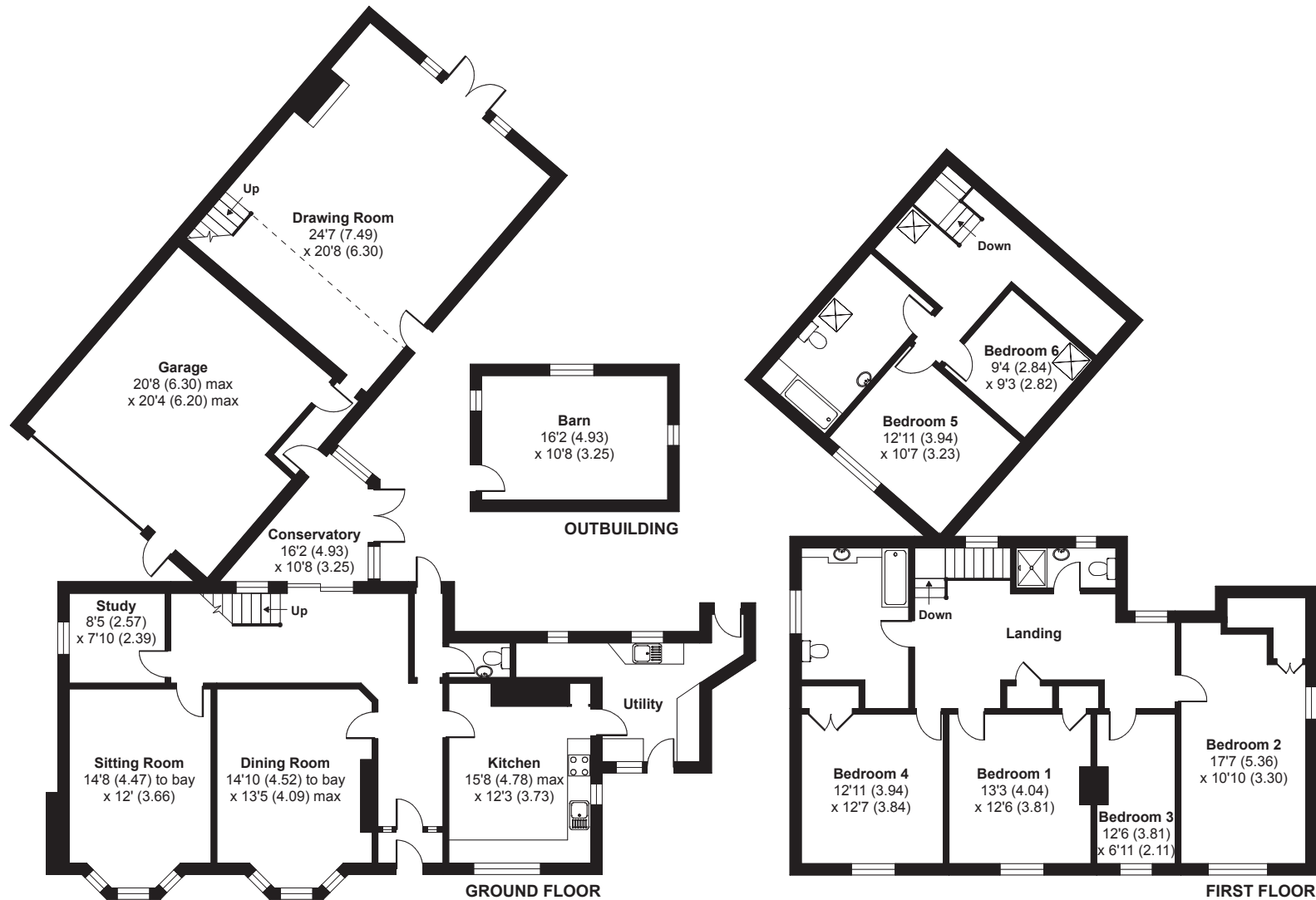


nichecom

Floorplan Examples

Church End, Haddenham, Aylesbury, HP17

APPROX. GROSS INTERNAL FLOOR AREA 3800 SQ FT 353 SQ METRES (EXCLUDES OUTBUILDING & GARAGE)

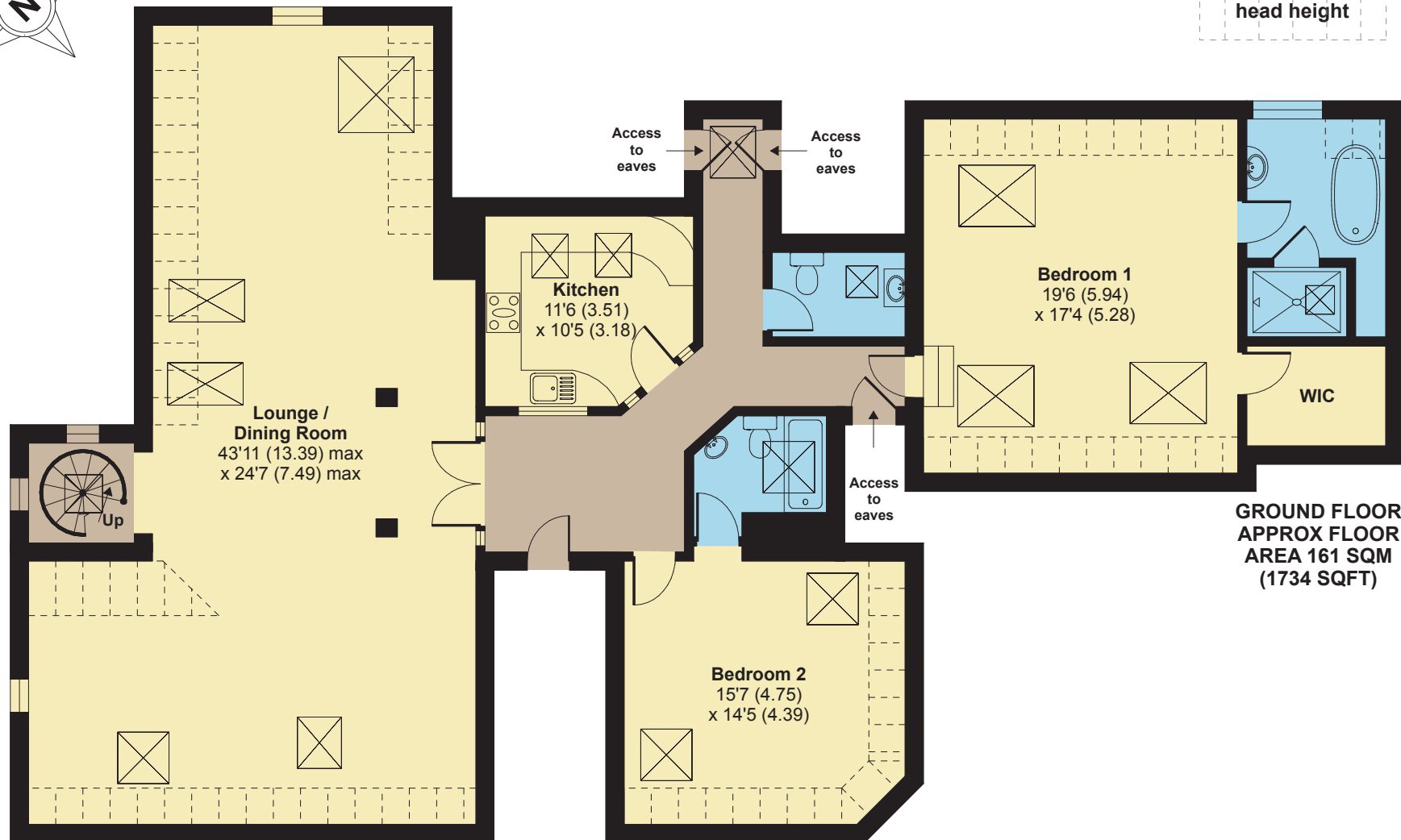


Whilst every attempt has been made to ensure the accuracy of the floor plan contained here, measurements of doors, windows and rooms are approximate and no responsibility is taken for any error, omission or misstatement. These plans are for representation purposes only as defined by RICS Code of Measuring Practice and should be used as such by any prospective purchaser. Specifically no guarantee is given on the total square footage of the property if quoted on this plan. Any figure given is for initial guidance only and should not be relied on as a basis of valuation.

Charwall Tower, Otley Road, Harrogate, HG2



Denotes restricted head height

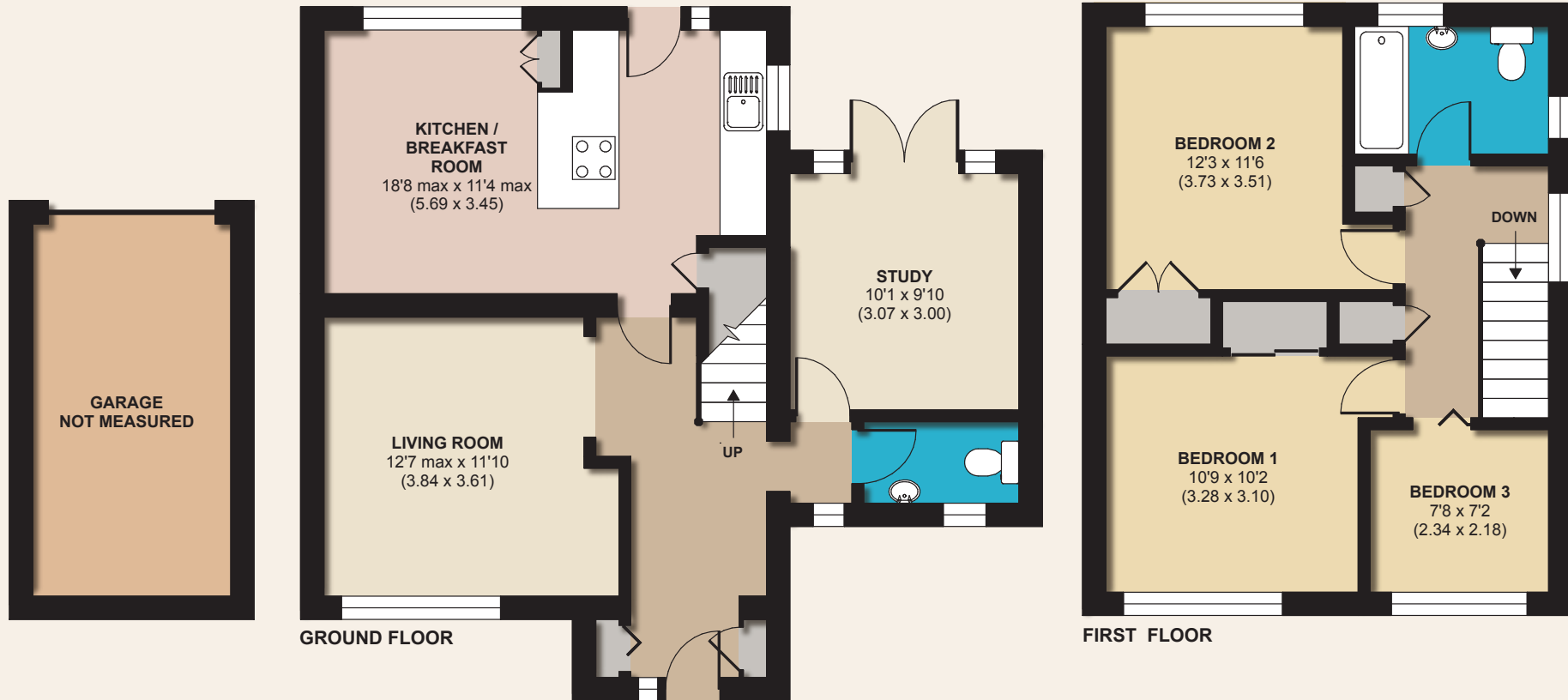


APPROX. GROSS INTERNAL FLOOR AREA 1734 SQ FT 161 SQ METRES (EXCLUDES RESTRICTED HEAD HEIGHT)

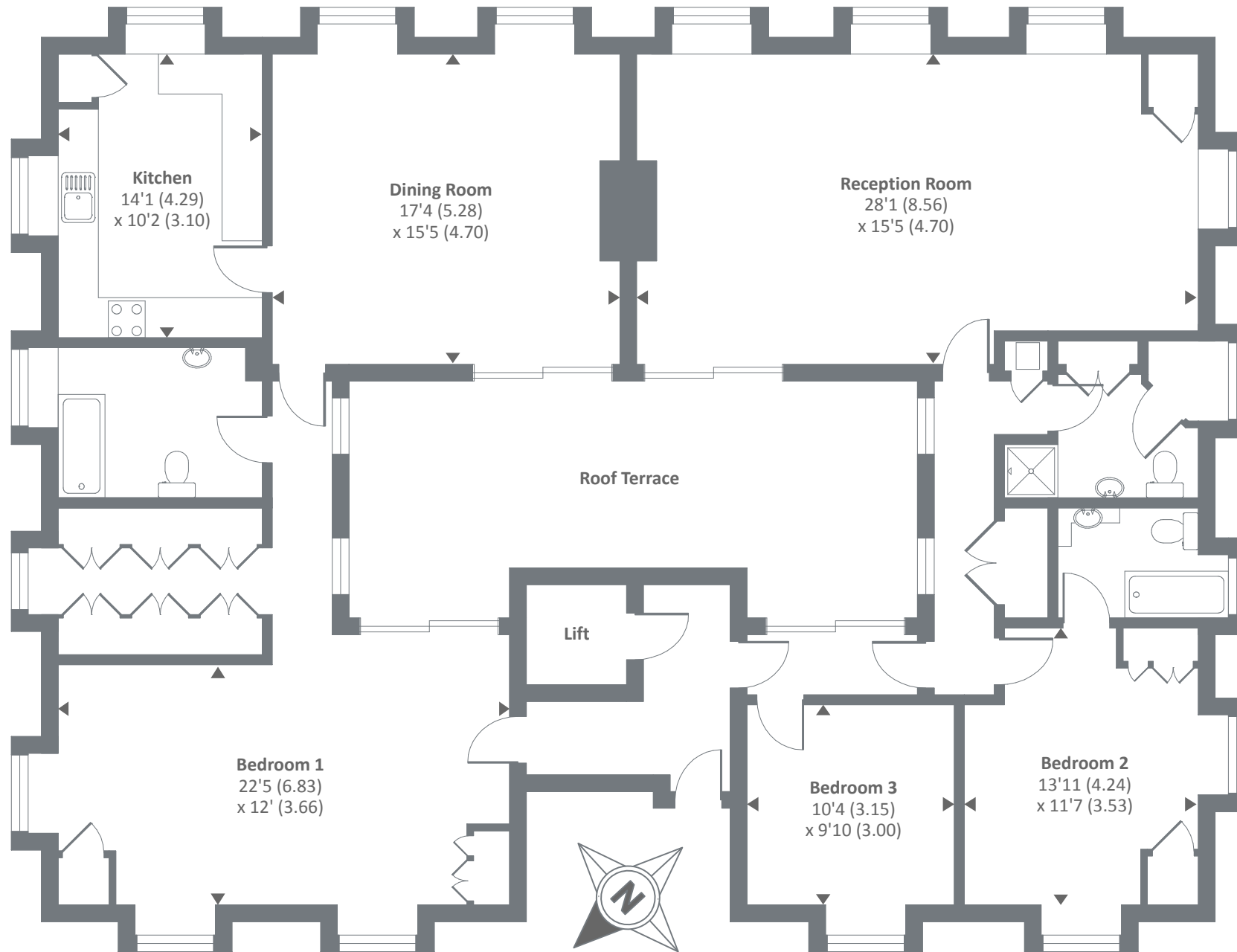
Whilst every attempt has been made to ensure the accuracy of the floor plan contained here, measurements of doors, windows and rooms are approximate and no responsibility is taken for any error, omission or misstatement. These plans are for representation purposes only as defined by RICS Code of Measuring Practice and should be used as such by any prospective purchaser. Specifically no guarantee is given on the total square footage of the property if quoted on this plan. Any figure given is for initial guidance only and should not be relied on as a basis of valuation.

Charwood Road, Wokingham

APPROX. GROSS INTERNAL FLOOR AREA 1103 SQ FT 102.4 SQ METRES (EXCLUDES GARAGE)

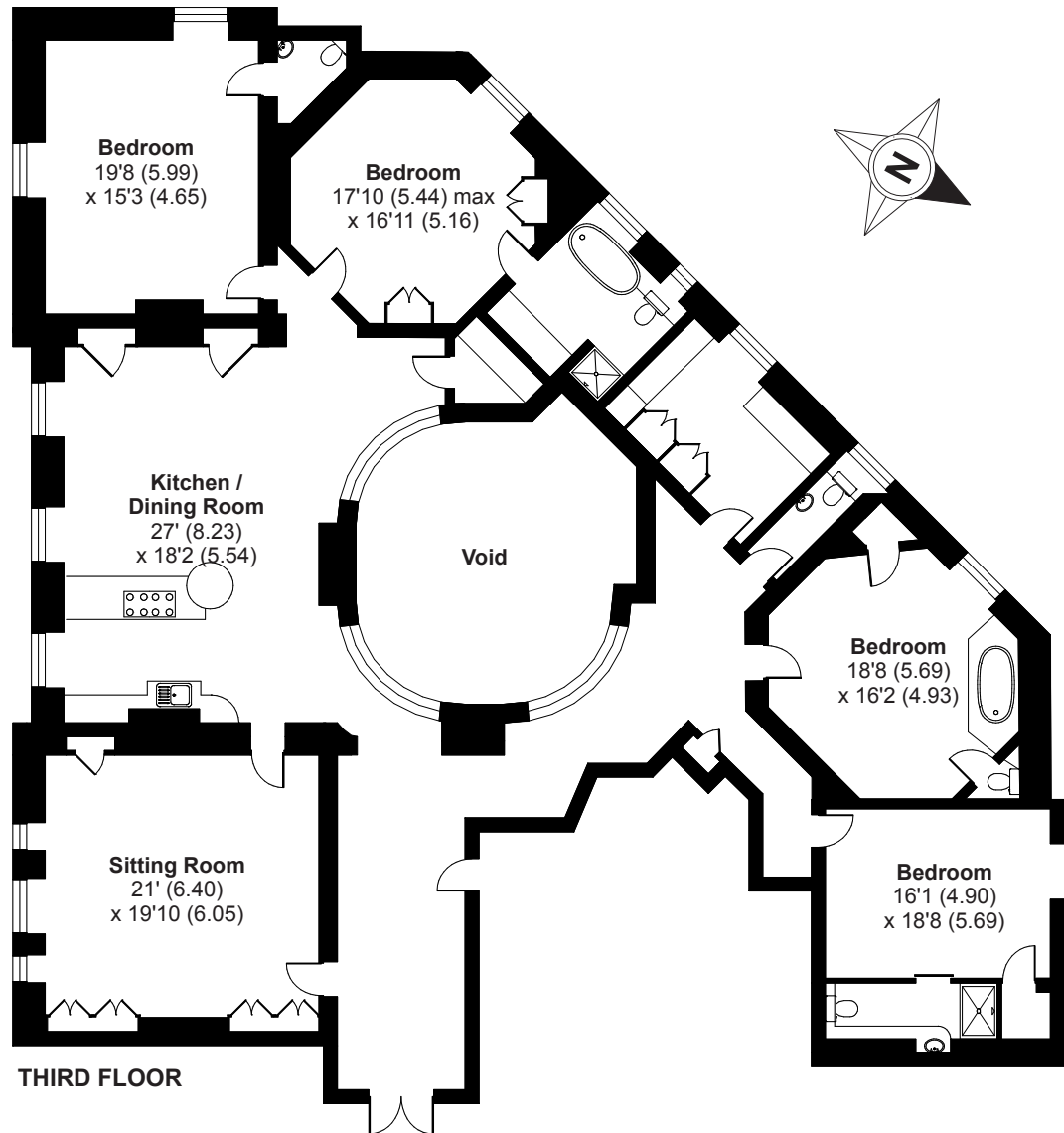


Whilst every attempt has been made to ensure the accuracy of the floor plan contained here, measurements of doors, windows and rooms are approximate and no responsibility is taken for any error, omission or misstatement. These plans are for representation purposes only as defined by RICS Code of Measuring Practice and should be used as such by any prospective purchaser. Specifically no guarantee is given on the total square footage of the property if quoted on this plan. Any figure given is for initial guidance only and should not be relied on as a basis of valuation.



Second floor

Approx. gross internal floor area 2068 SQFT / 192 SQM
 Copyright nichecom.co.uk 2015 Produced for Chancellors REF : 376883



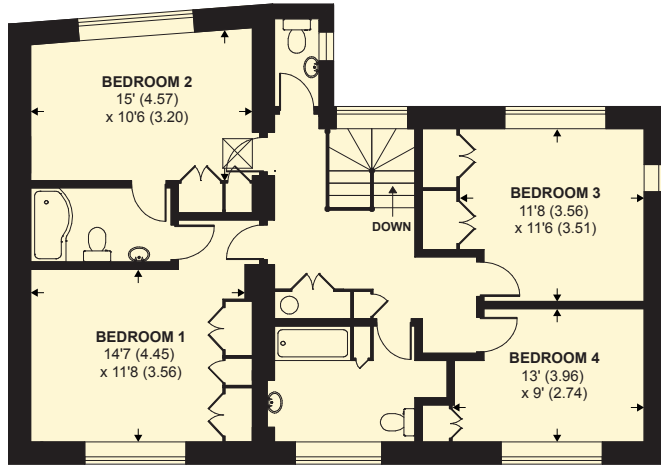
**GROSS INTERNAL FLOOR AREA 3257 SQ FT 302.5 SQ METRES
(EXCLUDES VOID)**

Edithna Street, London, SW9

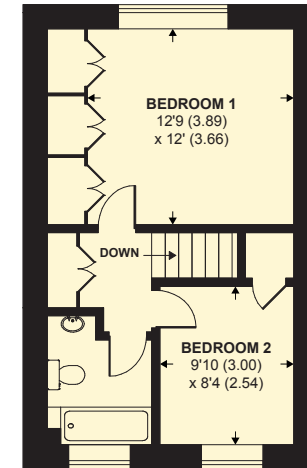
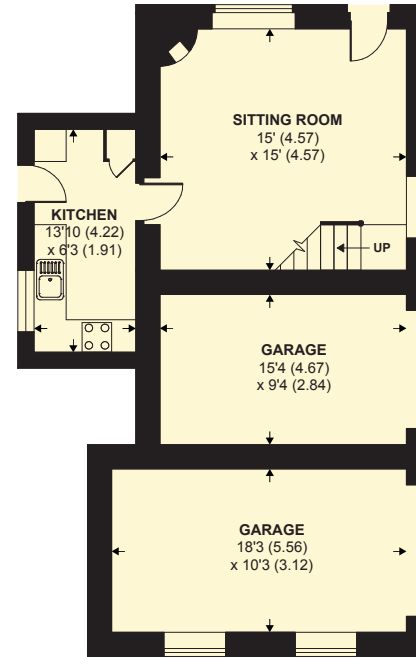
Whilst every attempt has been made to ensure the accuracy of the floor plan contained here, measurements of doors, windows and rooms are approximate and no responsibility is taken for any error, omission or misstatement. These plans are for representation purposes only as defined by RICS Code of Measuring Practice and should be used as such by any prospective purchaser. Specifically no guarantee is given on the total square footage of the property if quoted on this plan. Any figure given is for initial guidance only and should not be relied on as a basis of valuation.

Greystones, Keep Street, West Camel, Yeovil, BA22 7QP

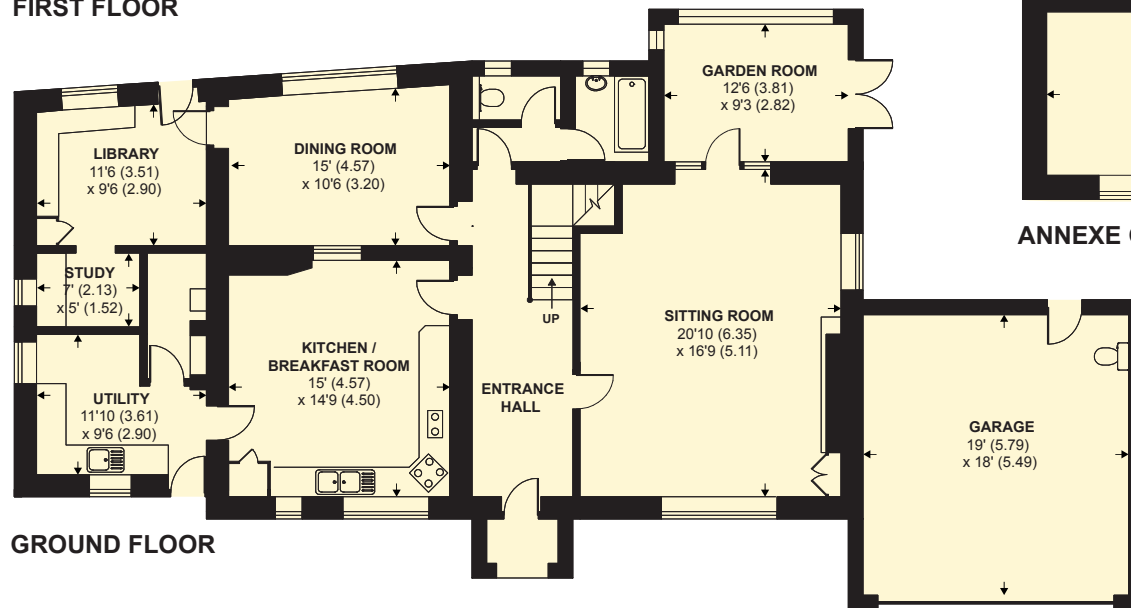
APPROX. GROSS INTERNAL FLOOR AREA 4014 SQ FT 373 SQ METRES (INCLUDES GARAGES & ANNEXE)



FIRST FLOOR



ANNEXE FIRST FLOOR

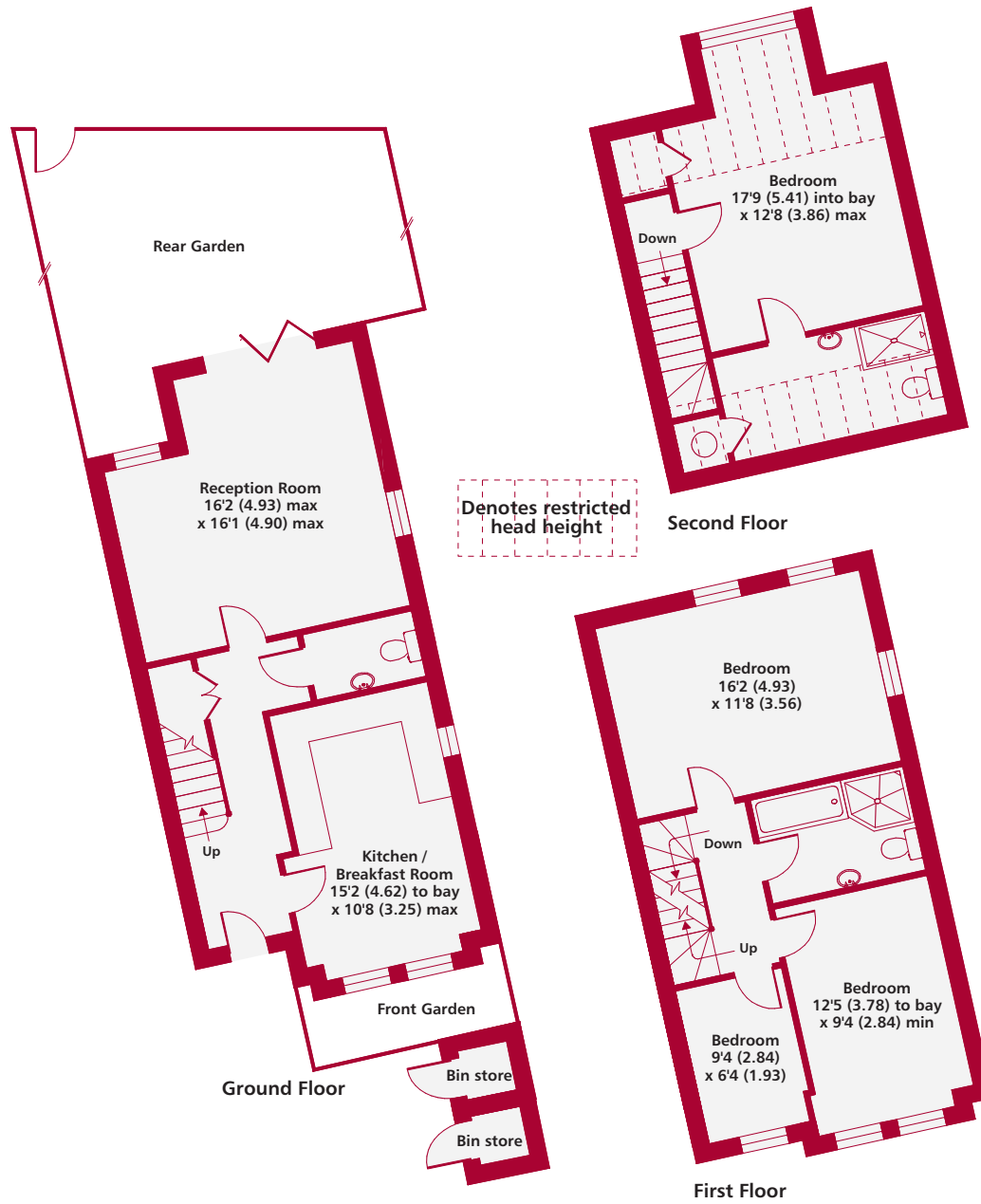


GROUND FLOOR

ANNEXE GROUND FLOOR



Whilst every attempt has been made to ensure the accuracy of the floor plan contained here, measurements of doors, windows and rooms are approximate and no responsibility is taken for any error, omission or misstatement. These plans are for representation purposes only as defined by RICS Code of Measuring Practice and should be used as such by any prospective purchaser. Specifically no guarantee is given on the total square footage of the property if quoted on this plan. Any figure given is for initial guidance only and should not be relied on as a basis of valuation.



Petersfield Rise SW15



Gross Internal Floor Area 1422 sqft 132.1 sqm (includes restricted head height & excludes bin store)

Copyright nichecom.co.uk 2015 REF : 9854

Whilst every attempt has been made to ensure the accuracy of the floor plan contained here, measurements of doors, windows and rooms are approximate and no responsibility is taken for any error, omission or misstatement. These plans are for representation purposes only as defined by RICS Code of Measuring Practice and should be used as such by any prospective purchaser. Specifically no guarantee is given on the gross internal floor area of the property if quoted on this plan and any figure given is for initial guidance only and should not be relied on as a basis of valuation.